



# Automation Brochure



**INDUSTRIAL  
CONTROLS  
DISTRIBUTORS**

a relevant. company

# About Industrial Controls Distributors

# Our Automation Vendor Partners

## About Industrial Controls Distributors

Proudly serving customers since 1976, ICD joined Relevant Solutions in 2022. Combining the power of these two industrial leaders, the new ICD currently serves 18 states across the Northeast, Great Lakes, and Southeast. With cutting-edge solutions in automation, SCADA, combustion, measurement, and process controls, we deliver results for customers across industries. Whether you're in oil & gas, power generation, chemical processing, manufacturing, or water and wastewater treatment, our engineering and field service teams design and implement safer, more efficient, and highly scalable systems to meet the demands of complex industrial operations.

## Products & Services



VALVES & REGULATORS



INSTRUMENTATION & AUTOMATION



ROTATING EQUIPMENT



STEAM & THERMAL EQUIPMENT



PURIFICATION & FILTRATION



COMBUSTION CONTROLS

## Services We Offer

- On-Site and Factory Classroom Training
- Applications Engineering
- Software Asset Management
- Control System Modernization & Audits
- Extended Warranty
- Extensive Evaluation Unit Demo Inventory
- Proof of Concept Systems
- Software Maintenance Contract Management
- Integrator & OEM Software Toolkits

## Engineering Services Include

- Control Network Support
- DCS and PLC Programming
- Engineering CAD Drawings
- Prototype Development
- HMI/SCADA Programming
- System Tuning and Updates
- VFD Start-Up
- Customized Training



Availability subject to location

# Industry Solutions

## Machine/Equipment Control

- Assembly
- Inspection Machinery
- Packaging Equipment Control
- Labelling
- Plant Floor Dashboarding
- Inspection
- Predictive Maintenance



## Oil & Gas/Chemical

- Wireless Tank Monitoring
- Distributed Control Systems (DCS)
- Harsh/Hazardous Area Systems
- SIL Safety Systems
- Vibration Monitoring
- Emissions Compliance & Reporting



## Power Generation/Distribution

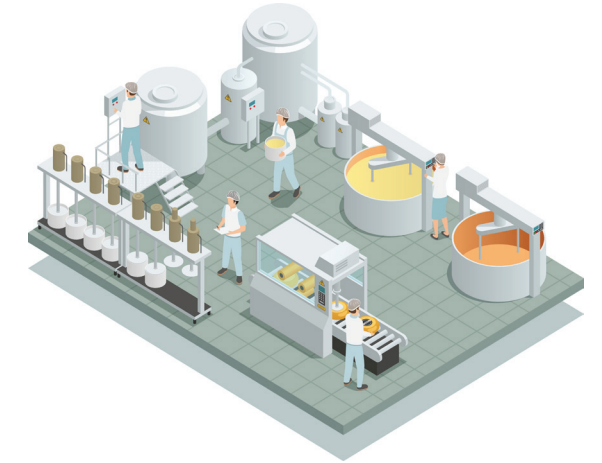
- Advanced Alarm Annunciation
- DNP3/IEC 61850 Integration
- Pothead Pressure Monitoring
- Balance of Plant Controls
- Safety Shutdown



# Industry Solutions

## Process/Manufacturing

- Heat Treating
- Temperature Control
- Batch Management
- Process Visualization
- Historian & Analytics
- Regulatory Compliance
- Pharma/Life Sciences
- Food & Beverage



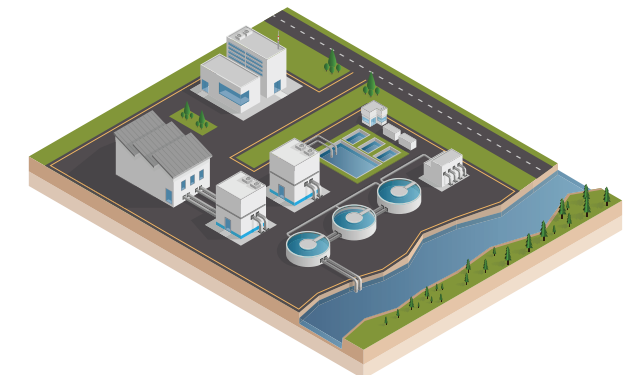
## Transportation & Infrastructure

- Tunnel Ventilation
- Airport & Bridge Lighting Control
- Sequence of Events Recording
- Critical Power Monitoring
- High Availability Power
- Building Automation



## Water/Wastewater

- Redundant Controller Architecture
- Remote Terminal Unit (RTU)
- Cellular Connectivity
- Plant wide HMI/SCADA
- Protocol Conversion & Networking Infrastructure
- Emissions Compliance & Reporting



# Programmable Logic Controllers

## PLCs & PACs

**Emerson PACSystems RX3i - 300 Series:** Get the most celebrated, awarded, and long-standing controllers available. Emerson's PACSystems tackle demanding industrial applications with deterministic control solutions that are scalable, open and inter-operable at the same time.

- Industry leading high-performance redundancy available
- Hot Swap I/O with Advanced Functions/Modules
- Optional EnergyPAC eliminates the need for batteries
- Wide Range of Standard and Special Purpose I/O
- Direct PROFINET I/O Support right out of the CPU
- Supports OPC UA data transfer standards



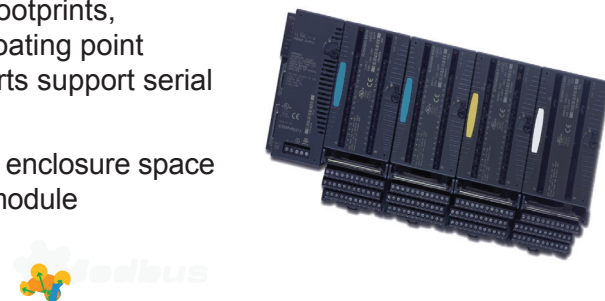
**Emerson PACSystems RSTi-EP - 200 Series:** Delivers large capability in a small, cost-effective, IIoT-ready form factor. With security-by-design, open programming, and open communications built in, it simplifies connectivity for OEMs and end users.

- Direct PROFINET I/O Support right out of the CPU
- Up to 4 MB User Memory and 32 PROFINET devices
- Over 40 I/O types available
- Supports OPC UA data transfer standards



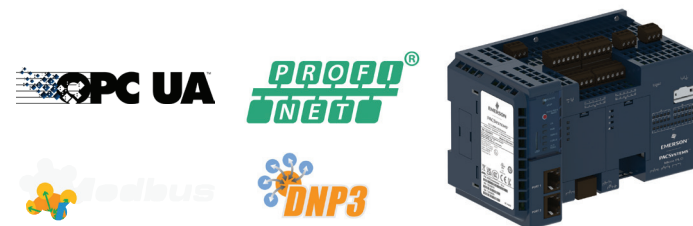
**Emerson VersaMax Modular:** VersaMax Modular CPUs supply a number of features usually found only in PLCs with larger footprints, including up to 128kB of memory for application programs, floating point math, real-time clock, subroutines, PID control. The serial ports support serial read/write and Modbus master/slave communications.

- Can be mounted horizontally or vertically to maximize enclosure space
- Wide variety of I/O Modules with up to 32 points per module
- Hot swappable I/O Modules
- Cost-effective I/O



**Emerson PACSystems Micro PLC - 150 Series:** The small-footprint PACSystems Micro offers the flexibility of modular design and a variety of built-in features, including up to 64 I/O points (expandable to 170 I/O points), fast cycle times, a robust instruction set and extensive memory that multiplies your programming options.

- Removable Terminal Strips
- PID, PWM and High Speed Counter Support
- Base units range from 14-64 I/O
- Accommodates up to 4 expansion modules



# Programmable Logic Controllers

**Emerson PACSystems Rx3i Rackless - 400 Series:** Part of Emerson's Industrial Internet Control System, the 400 series is a hypervised, multicore, outcome optimizing controller. It is now possible to combine real-time deterministic control with physics-based analytics to securely connect to, easily collect, and analyze industrial data directly at the machine.

- Redundancy Built-In
- PROFINET I/O Control Built In
- DNP3 Communications
- Open Linux programming with the CPL410 model
- Optional EnergyPAC eliminates the need for batteries
- Supports OPC UA data transfer standards



**Emerson PACSystems Rackless Controller - 100 Series:** The demand for improved asset performance and productivity is increasing in manufacturing and infrastructure markets. They require even smaller applications with robust execution performance and a range of connectivity options to real-time application status information and diagnostics.

- Dual LAN interfaces with four Ethernet ports
- Built-in RS-232 serial port
- A range of communications protocols
- DNP3 Outstation for Remote Terminal Unit (RTU) applications
- Up to 1.5 MB of non-volatile user memory
- All in just 1.5" (38.1mm) of DIN rail space



**Emerson PACEdge Platform:** PACEdge is an IIoT application enablement platform for the development of scalable data intensive Industry 4.0 solutions. It provides integration between OT and IT domains without disrupting OT assets, architectures or systems while satisfying IT cybersecurity, communications and application requirements. It has been designed specifically to be user-friendly to both IT and OT experts. All components necessary in an IIoT application are brought together in a scalable package to decrease your development time and increase your deployable footprint.

- Advanced Analytics
- Multiple Visualization Options
- Secure Networking
- Cloud Connectivity
- Preloaded and easy to get started



# Process Controls

## Process Controllers

**Honeywell ControlEdge Process and Safety System:** An ideal control solution for user needs ranging from thermal control in boilers, furnaces, kilns, and dryers to unit processing in pharmaceutical, chemical, bio-fuel, pilot-plant and other applications. The ControlEdge can be used in applications requiring SIL2 such as emergency shutdown (ESD), critical controls, burner management systems (BMS), pipeline monitoring, tunnel ventilation systems and other critical applications.

**Honeywell**

- SIL2 Safety Controller
- High Performance multi-loop controller
- Menu driven functions and variable mapping make it easy to configure and program, with minimal programming skills required
- Purpose built HMI with quick and easy integration
- Full Redundancy available and easy to implement
- Powerful, purpose built, function block library. Designed to save time and frustration with stubborn control loops



## Distributed Control Systems (DCS)

**Honeywell Experion:** The perfect platform for users to extend their scope at any time from process control and management to include personnel and assets, and to even integrate the resources of their entire business operations. Experion offers proven technology with the right agility for greater reliability and advanced control.

**Honeywell**

- Flexible platform options based on Series 8 and ControlEdge
- Includes model-based advanced control technology for loopcontrol optimization
- Ensures no “loss of view” of the core process through Experion Direct Connect Station
- Utilizes Honeywell’s patented Fault Tolerant Ethernet (FTE) capability ensures greater reliability
- Employs IT-enabled solutions for improved performance and operations (e.g., virtualization, data mobility, remote operations)
- Changes control process verification for regulatory compliance
- Simplifies engineering and maintenance functionality



# Process Controls

## Loop Controllers & Panel Meters

**Honeywell UDC2800:** We’re delighted to introduce Honeywell’s new generation of temperature controller. Bringing easy-to-use, better accuracy, precise tuning and Bluetooth configuration, UDC2800 will give you enhanced control of both your process and costs. Replacing the UDC3200 and UDC2500 devices, the new controller offers radically enhanced performance, efficiency, connectivity and visibility to save time and costs:

- Big saving on configuration cloning with unique Bluetooth connectivity and mobile app
- Improve visibility with a TFT full-color display
- 1 or 2 control loops
- Compliant with AMS2750G
- 40% more precise control with 0.15% accuracy
- 40% faster with 100 msec sample speed
- Enhanced Setpoint Programming flexibility with up to 64 segments
- 100% backward compatible



**RedLion Digital Panel Meter PM-50:** Monitor your equipment with ease using the PM-50, featuring a 3.5-inch touchscreen display, vibrant graphics, and mobile connectivity. Simple to set up and operate, it delivers instant access to performance data for faster decisions — all in a modular, Industry 4.0–ready design.

- Visualize operational data
- Fast and simple setup
- Seamless to connect
- Easy upgrade to a smart factory floor
- Easy to read graphical screen
- Simple to operate and scale
- Connectable digital inputs



## Data Recorders

**Honeywell Trendview Data Recorders:** Honeywell data recorders reliably record electronic data in a secure format from directly connected sensors or transmitters that can be used for documentation of the process conditions and process improvement.

- Trendview paperless options offer a fully digital solution
- DRC900C Circular Chart Recorder offers a physical paper solution
- Options for 1 to 48 Analog inputs
- Built-in Ethernet communications
- 21 CFR Part 11 compliant
- AMS2750 Process and TUS Modes
- Advanced feature add-ons (i.e. alarming, reporting, remote viewing, math functions, batching, & protocol support.)

**Honeywell**



# Instrumentation

## Transmitters

**Honeywell Smartline Transmitters:** Deliver industry-leading performance, accuracy, and reliability. The modular design and seamless integration with control systems ensure a user-friendly experience across the entire plant life-cycle. **Available for: pressure, temperature, level, and multi-variable measurements.**

- Fast! 100 milliseconds response time.
- Accurate! Up to 0.0375% accuracy.
- Modular! Simple field changes or repairs.
- Connect! With HART, DE, Modbus, and 4-20mA.
- Stable! Drift as low as 0.008% per year.
- Safe! SIL 2/3 & hazloc; FM, CSA, ATEX, IECEx.



**Honeywell VersaFlow Transmitters:** As part of Honeywell's broad lineup of field instruments, VersaFlow flowmeters are built to our exacting standards for quality, performance and reliability backed up by a comprehensive global support network.

- Coriolis
- Magnetic
- Vortex
- Clamp-on Ultrasonic



**Flowline Level Transmitters:** Flowline transmitters provide reliable, continuous measurement of liquids and solids using radar, ultrasonic, or guided wave technology. Designed for chemical, water, wastewater, oil, and dry material applications, they deliver precise, low-maintenance performance in demanding environments.

### Features:

- Radar, ultrasonic, and guided wave models
- Non-contact options for corrosive media
- 4–20 mA, HART, or Modbus outputs
- High accuracy and easy installation



**Honeywell**

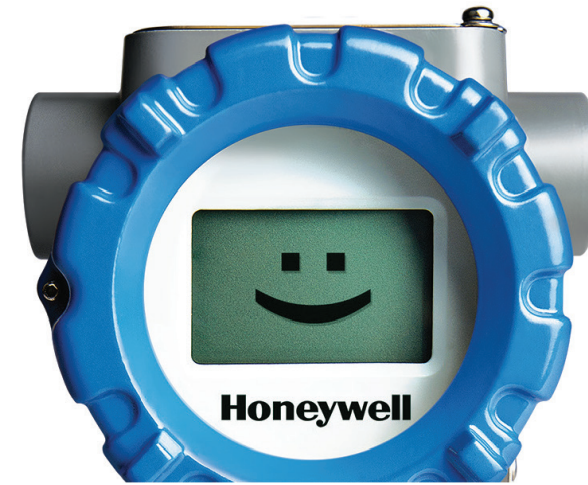
# Instrumentation

**Relevant offers a little something extra... Smartline Anytime Program:** Through the Relevant Solutions Smartline Anytime Program, we house over \$1 million of Honeywell transmitters in inventory. This gives us the capability to assemble over two million different configurations, in addition to offering custom solutions with accelerated delivery.



## Smartline Anytime

- Assembled in Houston, TX at the Relevant Solutions certified Honeywell Manufacturing facility
- In-house expertise to evaluate, design and make recommendations
- Custom Configurations
- Faster delivery than factory
- Emergency 24 - 48 hour turnaround available



## Configuration

**Honeywell Versatilis Configurator:** The next generation smart and flexible solution for configuring, calibrating, monitoring and diagnosing all of your instrument devices.

- Hands-free modem communicates from a distance using Bluetooth
- Free App for configuration and diagnostics
- Communicate with HART, Modbus, DE, and Bluetooth devices
- Advanced asset management features such as off-line configuration, device simulation, and historical log.
- Optional tablet:
  - Pre-loaded with required software and all registered HART DD files
  - Simple, free, and automatic upgrades to DD files
  - Intrinsically safe for hazardous locations
  - Open platform for other secure productivity and mobility applications

**Honeywell**



## Distributed

**Emerson PACSystems RSTi-EP:** The RSTi-EP remote I/O system is well suited for Industrial Internet enabled applications. It features an extended operating temperature range, enhanced diagnostics, plug-and-play connectivity and high channel density – all designed to simplify machine design and maintenance.

- PROFINET RT, Profibus/Ethernet IP/Modbus TCP-IP, EtherCAT Interfaces
- Hot swappable with advanced diagnostics
- Supports PROFINET System Redundancy
- Best in class I/O density – Up to 64 I/O modules per node.  
Takes up half the space of traditional systems
- High Density Analog and Digital Modules
- Special function modules including High speed counter, Frequency, SSI Encoder, PWM Output, Serial Communications
- SIL 3 Compliant Safety Module



**Emerson PACSystems RX3i PROFINET Scanner:** Enables connections of a remote universal RX3i I/O rack of Series 90-30 or RX3i modules to a PROFINET I/O Controller.

- PROFINET RT, Profibus/Ethernet IP/Modbus TCP-IP, EtherCAT Interfaces
- Direct fiber interfaces to remote IO
- Up to 16 Slot racks can be a single node
- Advanced Sequence of Events recording version available with IRIG-B time synchronization



**Emerson PACSystems RX3i CEP I/O Carrier:** The RX3i CEP Carrier, a single-slot RX3i carrier with integrated PROFINET network interface and redundant 24 VDC power supply inputs, is the latest one-slot (expandable to two) expansion module from Emerson. It offers use of existing, advanced RX3i or Series 90-30 I/O in a small footprint, with superior availability for maximum uptime, and maximum flexibility to reduce operating costs.



**Emerson VersaMax Remote I/O:** The wide variety of modules available in the VersaMax PLC are also available for many demanding remote I/O applications. PROFINET Scanner I/O support with direct copper or multi-mode fiber interface, redundant power supplies, hot swappable I/O PROFINET, Ethernet Global Data (EGD) and Genius I/O Interfaces System Redundancy Support.



## Harsh Environment

**Emerson RSTi-OM:** Edge connectivity and a user-friendly configuration makes RSTi-OM I/O the easiest connection to the intelligent sensors and devices that your operations rely on. RSTi-OM modules are IP67 so they are protected from water, dust, and other extreme conditions. This rugged design allows you to place advanced I/O where you need it, without the use of a control cabinet.



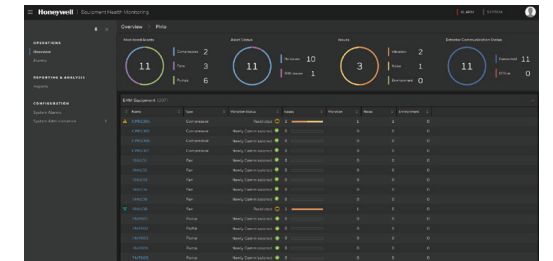
## Equipment Health Monitoring

**Honeywell Versatilis Transmitter (HVT):** A multi-variant sensing platform based on the latest LoRaWAN protocol communication technology. Its inherently low-power compact design coupled with quick & easy installation, and commission helps manufacturers to deploy them at scale with the lowest CAPEX and negligible OPEX. Measurement parameters:

- Vibration
- Audio Acoustics
- Surface Temperature
- Ambient Temperature
- Humidity
- Ambient Pressure



**Honeywell's Equipment Health Monitoring (EHM):** Provides real-time, on-premises monitoring of critical assets like pumps, motors, and compressors, utilizing advanced sensors and AI-powered analytics to enhance safety, reliability, and efficiency. By detecting deviations early and enabling predictive maintenance, the system minimizes downtime and reduces operational costs across industrial applications.



## Wireless Instruments

**Honeywell SmartLine Wireless Pressure Transmitters:** The SmartLine Wireless Pressure series delivers a scalable, future-ready solution for accurate pressure measurement and seamless integration with Honeywell's Experion® control system and Connected Plant portfolio. Built on the ISA100 Wireless protocol, it interoperates effortlessly within OneWireless networks.

### Features:

- Scalable, high-performance wireless pressure measurement
- Seamless integration with Experion and OneWireless systems
- Compatible with XYR 6000 wireless transmitters
- Ready for both monitoring and control applications
- Easy to expand and future-proof for evolving plant needs



**Phoenix Contact Radioline Wireless System:** The wireless system for extended systems. Special features include extremely easy assignment of inputs and outputs by simply turning the thumbwheel, without any programming. Thanks to Trusted Wireless 2.0 technology, Radioline is the ideal choice for reliable use in industrial environments.



# Industrial Computing & Displays

## Industrial Compute

**Emerson IPC 6010, IPC 7010, & IPC 8010:** Emerson's next-generation IPC platform includes the IPC 6010, IPC 7010, and IPC 8010, each delivering high performance computing and graphical capabilities in a ruggedized package. These high powered IPCs are well suited to process time series data from various sources like PLC's, cameras, sensors, flow meters or valve manifolds, powering HMI, Historian, and analytical solutions for remote monitoring, leak detection, and preventative maintenance applications.

- 13th Generation Intel Core Processors
- Up to 64GB RAM
- Up to 4 TB SSD
- 2.5 GigaBit Ethernet
- Thunderbolt 4
- Linux or Windows OS
- Up to four optional PCIe slots
- AI GPU Option
- Optional Wifi and Bluetooth
- Patented passive CPU cooling technology up to 70°C



**Emerson Micro - IPC 2010:** Emerson's PACSystems IPC 2010 Industrial PC (IPC) delivers high-efficiency computing performance and graphics capabilities in our most compact, ruggedized package.

- ARM Cortex CPUs
- 2 GB RAM
- Two 10/100/1000 BASE-T Ethernet ports
- One USB-C
- Two USB 2.0
- One RS-232
- 64 GB Internal Storage
- One Micro SD Card Slot
- Optional: Wifi & Cellular Modem



# Industrial Computing & Displays

**Emerson RXI Panel PCs and Industrial Monitors:** The RXI portfolio ranges from 12-24" screens with select models available with outdoor sunlight readability. The modular nature of the unit offers a substantial amount of flexibility. For instance, you can easily swap an indoor screen for an outdoor screen, change screen sizes, or simply replace a damaged screen, while utilizing the same computing unit. For Panel PC applications, multiple compute modules are available allowing upgrades without making screen hardware changes.

- Durable projected capacitive screen technology
- Multi-touch (10 point) screen control
- Sunlight readable option
- Multi-display daisy chaining via Display Port



## Dell Rugged Extreme Laptops



**Dell Latitude 7424 Rugged Extreme Laptop:** The Latitude Rugged family has been trained and tested for some of the world's toughest jobs and most hazardous environments. Built smart and durable to ensure you never have to slow down.

- Multi-touch, sunlight readable 1000 nit brightness
- Glove touch and passive pen enabled
- 6 foot drop tested & IP65 ingress protection
- Can be bundled with Emerson PAC Machine Edition programming software



## Dell Rugged Extreme Tablets

**Dell Latitude 7220EX Rugged Extreme Tablet:** Intrinsically safe for maximum productivity. Stay focused, even in potentially explosive environments, with the ATEX, IECEx certified\* Latitude 7220EX Rugged Extreme Tablet, featuring a 1000-nit sunlight-viewable anti glare screen and glove-touch capability.

- 4G/LTE mobile broadband built-in

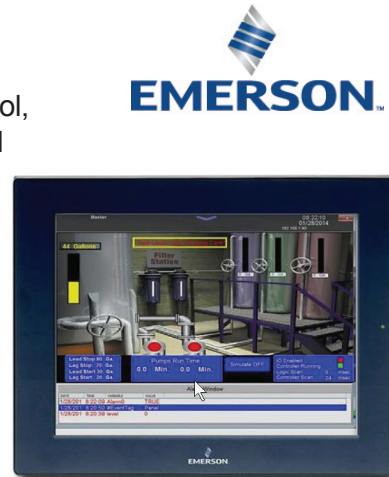


# Operator Interface & Visualization

## Operator Interface & HMI

**Emerson QuickPanel+ Operator Interface:** QuickPanel+ integrates process control, view, and an option to run embedded data historian to improve real-time control and simplify integration into plant-wide systems. The QuickPanel+ takes machine interfaces into the Industrial Internet age for new levels of productivity, insight, and user experience.

- PACSystems Operator Interface
- Highly responsive, capacitive and multi-touch functionality
- Control capability with Emerson and third party I/O
- Fully integrated view, control and data historian collector
- Fully-functional browser and multimedia capability including sound and video playback
- User defined email and text alerts
- Custom, web reports and graphs
- Powerful scripting options



**Emerson Quickpanel Pro Operator Interface:** Introducing the Emerson QuickPanel Pro, the next-generation successor to the acclaimed QuickPanel+ series, building on decades of innovation in operator interfaces that began with the original QuickPanel line. This advanced all-in-one HMI solution delivers enhanced performance, seamless connectivity, and intuitive control to empower modern industrial operations with greater efficiency and insight.

- 7" through 24" widescreen display
- Projected Capacitive Multi Touch
- Backwards compatibility with:
  - Seamless application migration
  - Mounting adapter kits



**Red Lion CR1000/CR3000 Series HMI's:** The new CR1000 and CR3000 HMIs are available in a broad range of sizes, from 4.3 inches up to 15 inches and feature a wide array of connectivity options to address the real-world challenges of today's multi-vendor manufacturing environments.

- More than 300 industrial protocols available with Crimson 3.1
- Updated and expanded symbol libraries and primitives with anti-aliased rendering, as well as the ability to support 16M colors
- Protocol translation and serial communications
- OPC UA, SQL, DNP3, and connectivity to major cloud providers



# Communications

## Protocol/Media/Serial/Ethernet Conversion

**Red Lion Data Station:** The DA Series Data Stations are designed to act as a nexus for industrial data collection and management. They offer protocol conversion, data logging and remote machine access. With three built-in serial ports and a 10/100Base-T(X) Ethernet port, the unit provides serial conversion (serial to/from Ethernet) and protocol conversion to enable seamless communication between disparate devices. The Ethernet port supports up to four protocols simultaneously so even Ethernet to Ethernet protocols can be converted. Built-in communications drivers and protocol conversion let you interface to most PLCs, drives, motion controllers and other automation equipment.

- Easy drag and drop configuration using Crimson
- Over 300 Protocols Supported
- DA Series adds data acquisition and Embedded OPC UA Server
- DSP series support additional plug-in communication options include CANopen, Devicenet and Profibus, as well as additional Ethernet/Serial Ports.
- High performance DSP model converts up to 15 protocols, simultaneously

**RedLion**  
BY HMS NETWORKS



**Red Lion Ethernet & Serial Media Converters:** Not only extend communications links, but also bridge connectivity between disparate types of media, connectors or speeds. Providing fast performance and rugged operating specifications, DIN-rail mountable media converters include copper and fiber – up to Gigabit speeds.



## Specialty Communications

**Prosoft Ethernet and Serial Gateways:** ProSoft Technology's stand-alone, DIN-rail mounted industrial gateways provide a means to read or write data from devices on dissimilar protocols. All gateways come with our ProSoft Discovery Service feature.



**ProSoft**  
TECHNOLOGY



**Emerson PACSystems RX3i Communication Modules:** For mission-critical power and water infrastructure systems and industrial projects where redundancy is a key requirement, Emerson has augmented its Ethernet-enabled control systems offering by developing 3 new modules embedded with IEC61850, DNP3 and IEC60870-5-104 standard Ethernet communication protocols, which can be rack-mounted into its PACSystems RX3i controller. With these "in-rack" the RX3i can connect down to the IED level and up to the SCADA level without an external gateway device.



**EMERSON**



# Networking & Communications

## Unmanaged, Monitored & Managed Ethernet Switches

**Emerson PACSystems Ethernet Switches:** Emerson switches provide critical network connectivity in the most challenging environments. They enable advanced computing performance while standing up to harsh conditions such as high and low temperatures and excessive vibration. Emerson offers a broad range of ruggedized, compact industrial Ethernet switches.

Wherever you deploy it, our industrial switching technology delivers optimized, secure performance essential to robust, connected industrial operations.

- Redundant power inputs
- Secure by design
- Gigabit communications
- Customizable SFP (small form pluggable) ports
- Built in media conversion



**Red Lion N-Tron Series Unmanaged Ethernet Switches:** Industrial unmanaged Ethernet switches offer powerful network performance with plug-and-play functionality. With an endless range of port options, these unmanaged switches are set to tackle the demands of industrial data acquisition, control and Ethernet I/O applications.

**Red Lion N-Tron Series Monitored Ethernet Switches:** Monitored industrial Ethernet switches provide network performance monitoring with Modbus or N-View monitoring technology. These rugged, compact switches are built for mission-critical applications and provide cost-effective network monitoring options that can be integrated directly into any industrial control system.

**Red Lion N-Tron Series Managed Ethernet Switches:** Rugged, reliable managed industrial Ethernet switches support industry-standard applications. These hardened switches are ideally suited for harsh industrial environments where real-time performance under extreme operating conditions is required. Built-in redundancy and network management ensure communications stay up and running while providing tools for monitoring and tracking.



# Networking & Communications

## PROFINET Enabled Managed Switches

**Emerson PACSystems PROFINET I/O Gigabit Ethernet Switches:** This latest series of PROFINET managed switches easily prioritize, partition and organize user networks while seamlessly integrating into PLC communications and providing hassle-free setup with integration to PAC Machine Edition development environment.

- Acts as a Profinet node in your PLC program
- Can branch other networks off of a Profinet ring
- Supports Profinet System Redundancy



## POE (Power Over Ethernet)

**Red Lion Power over Ethernet Plus (PoE+) Managed and Unmanaged Switches:** Red Lion's N-Tron POE+ products enable plug-and-play operation for up to sixteen 10/100/1000Base-T(X) devices with PoE+ support on 8 ports.



## Cellular RTU & Networking Gateways

**Red Lion FlexEdge Intelligent Edge Automation Platform:** FlexEdge is a highly scalable IIoT platform that embodies communication technology at its core and layers on powerful automation features like industry-leading protocol conversion, multichannel alerts, visualization, data logging, IIoT cloud connectivity, and advanced networking features.

- The FlexEdge is an advanced protocol converter with modular communication and data logging
- The DA70 adds edge controller capability and integrated, scalable I/O.
- Over 300 protocols available
- Communication sled architecture enables customized connectivity including Serial, Cellular, USB and Wi-Fi Client



# Power Quality

## DC Power Supplies

**Emerson SolaHD SDN Series:** These DIN rail power supplies offer extreme reliability and efficiency, easy troubleshooting and our most resilient design for use in harsh environments, extreme temperatures, and hazardous locations.

- 5 Year Warranty Standard
- Wide -40°C to +70°C operating range
- Single and three phase inputs
- Up to 960 Watts
- Redundancy options
- DC OK Relay Output
- ATEX and IECEx approved



## SOLAHD



**Emerson SolaHD SVL Series:** When your equipment is installed in a controlled environment, these power supplies convert AC to DC power in a compact footprint.

- 2 Year Warranty Standard
- Single Phase Input delivers Up to 480 Watts



## UPS (Uninterruptable Power Supply)

**Emerson SolaHD SDU DIN Rail UPS:** The SolaHD SDU Series DIN Rail UPS provides economical protection from damaging impulses and power interruptions. These units include easy to wire screw terminations for critical devices needing battery back up such as PLC/PAC control systems.

- Lightweight, compact industrial design
- Communications port for optional Industrial Ethernet protocols or discrete communication card
- User Replaceable Long-Life High-Temperature Battery



## Power Conversion and Protection

**Emerson SolaHD Complete Power Solutions:** Industrial environments depend on electronic equipment to succeed in today's highly competitive, efficiency-driven business world. Power quality issues, such as voltage fluctuations, harmonic distortions, noise, and power outages disrupt production, damage equipment, and corrupt valuable data.



# Motion Control & Safety

## Variable Frequency Drives

**Emerson PACMotion VFD:** An integrated, rugged, and modular variable frequency drive designed for a range of applications, including water/wastewater, metro, mining, food and beverage, packaging, oil and gas, and discrete manufacturing.

- Seamlessly integrates with PACSystems RX3i applications
- Incorporated within Emerson's Machine Edition
- PROFINET System Redundancy support
- 0.75 up to 250kW (1 up to 400 HP)
- Integrated Safe Torque Off (STO)
- Built-in IO
- Modbus support
- -10°C to 60°C
- Up to IP66/NEMA-4X



## Servo Motion Control

**Emerson PACMotion Servo:** PACMotion is tightly integrated with Emerson PAC Machine Edition, with motion, HMI, PLC, and machine logic events integrated into the same view.

- Up to 40 axis of control in a single system
- Multiple encoder options
- Functional replacements for legacy FANUC motion systems.



## Safety

**Emerson PACSafe Machine Safety Controllers:** The PACSafe Configurable Safety Controllers easily scales from small to complex machines and provides an intuitive graphical-based interface for configuration and programming.

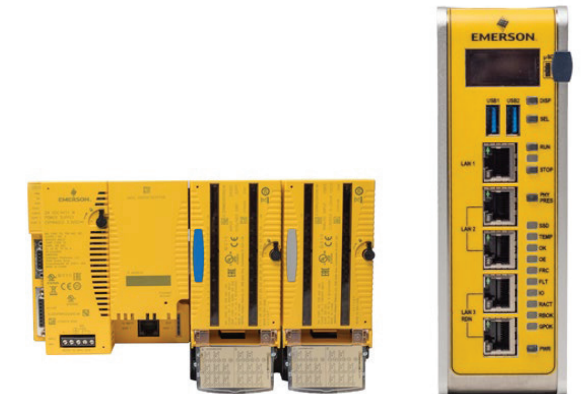
- Intuitive icon-based programming with drag-and-drop configuration
- Pre-configured safety function blocks to simplify application programming



## Emerson PACSystems Safety Controller with SafetyNet IO:

The PACSystems Safety controller is a crucial component of a cost-effective general safety solution, catering to a variety of markets, including Infrastructure, Emergency Shutdown Systems (ESD), Fire & Gas, and Burner Management Systems (BMS).

- Supported in PAC Machine Edition
- SIL2 Process Safety Support
- -40°C to 70°C



## HMI/SCADA

**Emerson Movicon.NExT:** The flexible Movicon.NExT software platform allows you to operate in one all-inclusive, easy-to-use development environment. The scalable architecture can be used to design any project, from small HMIs to more expansive control rooms, providing exceptional cost efficiency and time-saving advantages, along with expanded configuration and deployment possibilities. The platform's intuitive configuration environment helps streamline complex project designs, seamlessly integrating native functional modules with third-party solutions for expanded performance capabilities. Core platform features, including configuration, communication, visualization, data recording, analysis, security and control, help deliver superior integration, scalability and interoperability advantages.



**Movicon.nExT™**

**Emerson Movicon Web HMI:** The solution to use for running Movicon.NExT projects with Web technology that is hardware independent and offers both I/O Servers and Web Servers for scalable and powerful HMI visualization. The WebHMI Server deploys HTML5 pages to display screens created with Movicon.NExT. Clients are based on Web browsers and can be local on the device as a HMI control panel, or on a remote PC or mobile device. WPF graphics are automatically converted to SVG.



**Movicon WEBHMI™**

## Manufacturing Solutions

**Emerson Movicon Pro.Lean:** By deploying Pro.Lean you will be able to communicate with any field system or device, collect and record data on database to analyse the Key Performance Indicators (KPI), calculate the Overall Equipment Effectiveness (OEE) and measure Downtimes with the aim to reduce loss and maximize profits.



**Pro.Lean™**

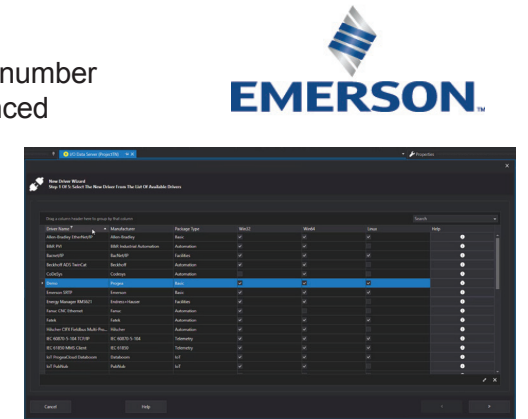
**Emerson Movicon Pro.Energy:** Implementing energy management systems is even more important than ever in today's world to help reach goals to become more efficient and reduce energy consumption that take up a large percentage of company running and building management costs. Pro.Energy aids Energy Managers and users in analyzing company consumption in order to manage energy more efficiently through valid decision-making strategies.



**Pro.Energy™**

## Protocol Drivers

**Emerson ConnexT:** ConnexT is an OPC UA Server that supports a large number of protocols for industries, infrastructures and buildings. It supports advanced features that include Gateway, Historian / Data Loggers, redundancy, OPC UA server and Client IIoT protocols, and many more. ConnexT is the ideal solution for every M2M, IT, and OT factory level connectivity need. The ConnexT Server offers the option to use the Historian to record data on relational databases (SQL Server is used for default) or in the Cloud (SQL Azure). By supporting OPC UA Historical Access, the ConnexT data server can therefore be used as a data collection system to provide historical data as well.



**ConnexT™**

## Reporting & Alarm Management

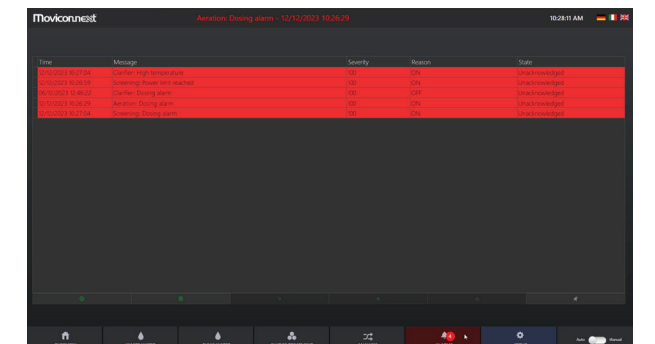
**Movicon.NExT Report Designer:** The Movicon.NExT Report Designer is the Report management module that is used to edit and perform powerful analytical reports at runtime on data recorded by the Historian modules and available on database.

The Report tool is used for displaying and printing recorded process data according to a specific time and date range. Thanks to Movicon.NExT, managing Reports becomes easy ensuring the openness needed to obtain previews and prints of data analysis Reports adapted exactly to each individual need of the end user.

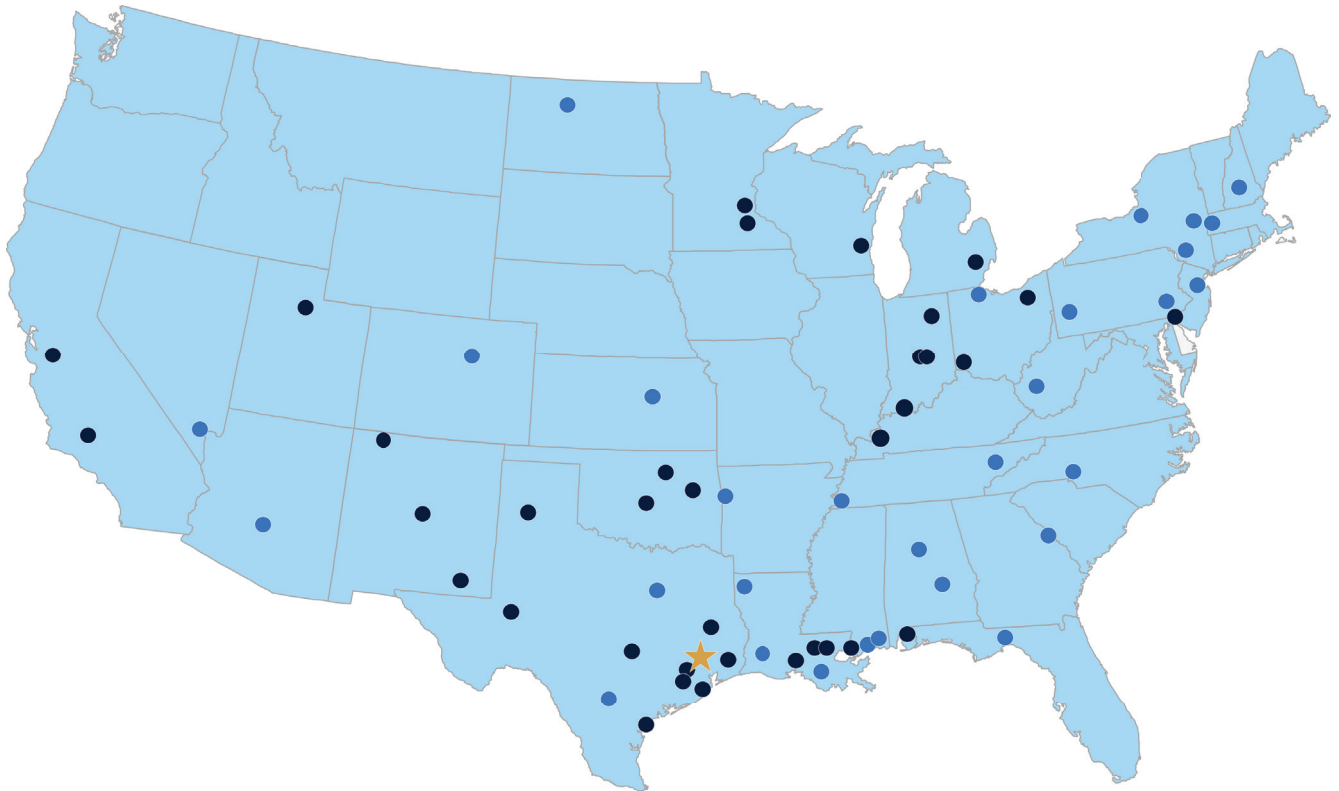


**Movicon.Next Alarm Dispatcher:** Movicon.Next alarm management allows to fully customize the configuration of alarms and events in the project, to achieve the desired granularity and accuracy of information.

- Alarm management template
- ON-OFF management, ACK, RESET, and SHELVE configurability
- Chronological recording supporting millisecond accuracy
- Comments management and operator audit
- Events notification management (SMS, email, voice, telegram)
- Statistical alarm analysis management



**Movicon.nExT™**



[industrialcontrolsonline.com](http://industrialcontrolsonline.com)  
[shoprelevant.com](http://shoprelevant.com)

Automation • Instrumentation • Analytical Devices • Combustion Controls  
 Steam & Thermal Management • Filtration • Valves & Actuation



Not all products available in all areas

v6.0  
9/8