

INSTRUMENTATION & AUTOMATION

Flow | Level | Wireless | Heat Trace | Combustion Gas Detection
Control Products | Valves & Regulators Engineered Products
Pressure & Temperature



relevant.

BAKERSFIELD, CA 661.323.8111 | MODESTO, CA 209.532.4674
relevantsolutions.com

MANUFACTURING PARTNERS

Honeywell

Process Measurement & Controls

Enraf Tank Gauging, DCS & PLC, Pressure, Level, Flow, Controllers & Recorders, Analytical Sensors & Controllers, ISA100 Wireless

Honeywell | INDUSTRIAL AUTOMATION

Industrial Fixed Point Gas & Flame Detection Systems, Toxic & Combustible Applications, Open Path & Cross Duct, Digital Gas System Controllers

Honeywell

ECLIPSE Innovative Thermal Solutions kromschroder MAXON

Burner Management & Flame Safeguard Controls, Industrial Flame Monitoring & Controls (formerly IRIS), Flare Stack Monitors, Pilot Ignition, Systems Gas Control Valves, Safety Shutoff Valves, Combination Valves, Butterfly Valves, Rotary Valve Actuators, Pressure Switches, Flame Safety, Single Burner, Burner Control Unit, Multi-Burner, Flame Switch, Process Firing System, Pulse Controller

azbil

Pressure Transmitters, Temperature Transmitters, Remote Seal Transmitters, Magnetic Flowmeters, Vortex Flowmeters, and Control Valves



Analyzers, Flame safeguards, combustion efficiency and burner controls

AMETEK®

SENSORS, TEST & CALIBRATION

Calibration, Temperature Measurement, Pressure Measurement, Position Measurement, Level Measurement, Material Testing, Force Measurement, Springs and Reels, Cable Management, and Weighing Solutions



Instrumentation & Process Gauges, Pressure & Temperature Indication



Thermometers, Probes, Gauges and Accessories



On-line Analyzers and Sampling Solutions



Thermocouples & RTDs, Protection Tubes & Assemblies, Programmable Temperature Transmitters



Relays & Timers, Switches & Pilot Devices, PLC, HMI & Power Supplies



Pressure, Level & Flow Instrumentation, Industrial Process Controls & Test Equipment Valves



Analytical Measurements (including pH), Dissolved Oxygen, Conductivity, Turbidity, TOC, Sodium, Silica, Gas Analyzer



Automation solutions for the best machines and production facilities – PLCs, VFDs, Servo Motion

BARTEC

Engineered Heat Trace, Heat Trace Wire & Accessories



Air Pressure Regulators, I/P, E/P, P/I Transducers, Valves, Positioners



FreeFloat® Steam Traps, Thermostatic Steam Traps, Thermodynamic Steam Traps, Air and Drain Traps, Steam & Condensate Manifolds, Condensate Pumps, Steam & Air Separators



Relays, Timers, Counters, Indicators & Power Supplies, N-Tron, Sixnet



Limit Switches, Industrial Sensors, Switches, Cordsets & Connectors



IR3 and UVIR flame detectors for all types of fires with optional integral video recording

STEAM AND COMBUSTION CAPABILITIES



Steam Trap Surveys

- Detailed testing of every trap on site
- Factory-trained technicians use state-of-the-art equipment
- Customer pays a survey fee
- Provides a detailed schedule of all traps needing service or replacement
- Documented energy cost reductions

TLV®

- FreeFloat® Steam Traps
- Thermostatic Steam Traps
- Thermodynamic Steam Traps
- Air and Drain Traps
- Steam & Condensate Manifolds
- Condensate Pumps
- Steam & Air Separators

*TLV not available in all areas**

EM&T

Energy Management & Technology
A Division of Rawson, Inc.

- Steam Trap Surveys
- Engineering Studies
- Energy Management

Combustion

Prior to becoming Relevant Industrial, Ron Mohr and Dick Wilson started Wilson Mohr Inc. in 1965, with the business being formed around Honeywell Flame Safeguard products. Wilson Mohr Inc. began integrating the safeguard products into BMS (Burner Management Systems) and introducing them into the Oil and Gas market. Since then, that foundation and passed down legacy combustion knowledge remain a staple business unit in Relevant Industrial.

What we offer:

- Flame Detection
- Burner Management Systems
- Combustion Controls
- Advanced Controls
- Boiler Controls
- Burner Service
- Flame Sequencing
- VFD Fan Control
- Multi-Burner
- Industry knowledge with 50+ years in the combustion business
- Comprehensive portfolio offering
- Dedicated team available 24/7





Control Valves and Valve Automation

- Standard and custom valve configurations
- Complete documentation of engineering drawings for assemblies
- Customer gets a complete package - control valve, actuator and instruments – that is assembled, tested and ready for installation



ATOMAC (TM) Lined Ball Valves, PMV (TM) Positioners, ARGUS (TM) Floating & Trunnion Mounted Ball Valves, and McCanna (TM) Floating & Top Entry Ball Valves, WORCESTER Floating Ball Valves (Full-port, flanged, 3-piece, reduced-port), DURCO Non-Lubricated Plug Valves, High Performance Butterfly Valves



Solenoid Valves, Process Valves, Pneumatic Valves, Redundant Control System, Fieldbus Electronics, and Manifold Systems

MASCOT Linear and Rotary Control Valves

LADISH VALVES Gate, Globe & Check Valves, Cryogenic Valves, and Floating Ball Valves

Limitorque Fluid Power Actuation

MARSH BELLOFRAM Control Valves, Pressure Relief Valves, Gauges, Needle Valves, Pilots, and Accessories

UNPPolyvalves Lined Ball & Butterfly Valves, Control Plug, Lined & Globe Control Valves

GEMU Industrial, Sanitary, Diaphragm and Ball Valves



All in One Proximity Sensor & Limit Switches, Superior Reliability and Durability

AIR TORQUE Pneumatic Actuators

SCHUBERT SALZER INC. Control Valves, etc.



Cryogenic, High Pressure, High Temperature, Control, & Sanitary Valves

NORRISEAL WELLMARK Control Valves, Back Pressure Valves, Check Valves, Regulators, Controllers and Switches



Desuperheaters, Severe Service Globe Control Valves, Ball-trol Control Valves

PLASTOMATIC Thermal Plastic Valves

Bray Butterfly Valves

Engineered Solutions

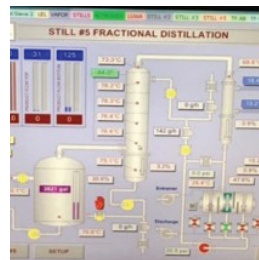
In-House Engineering & Design



On-staff engineering team that is focused on servicing our industrial customer-base that offers:

- Tailor made solutions to help customers solve their difficult process control problems

SCADA Programming & Automation



- Standard and custom configurations
- Specify solutions with the right software, controllers and all interfaces
- Customer gets a complete solution that is designed, assembled, tested and ready for installation
- Customizable from remote location

Industrial Automation

- Front End Engineering Design
- Compliance Audits
- Main Automation Contractor
- Control Skid Manufacturing
- HMI/SCADA Programming
- Custom Instrument Air and Nitrogen Packages
- System Tuning and Updates
- DCS/PLC Programming
- Wireless Network Engineering
- Measurement/Control Engineering
- Engineering CAD Drawings



Industrial Automation & Control Premier Distributor

Combustion Automation

- Fuel Train Design and Manufacturing
- Industrial Flame Monitoring
- Code Compliant BMS / Combustion Control Panels
- Combustion Field Service
- Burner Application Engineering
- Safety Evaluations
- GAP Studies
- Efficiency Evaluations

Automation Products

- Edge Control Systems
- PLC/PAC
- Operator Interface
- HMI/SCADA
- Cloud-Enabled RM&D
- Ruggedized IPC/Display
- Variable Frequency Drives