

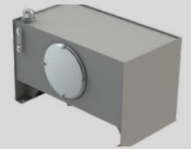
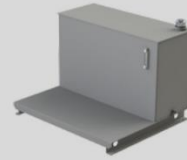
CUSTOM HPU

POWERING AMERICAN INDUSTRY



RESERVOIR

- Material Types (*Carbon, Stainless, etc.*)
- Sized to Fit Applications
- Custom Paint Options (Color, Type, etc.)



CLASSIFICATION/ ENCLOSURES

- NEMA 4x, 3R
- Class 1 Div 2 Gas Groups C&D (non-explosion proof) and non-Hazardous Locations.



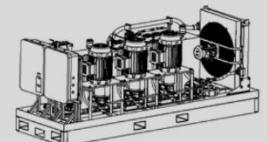
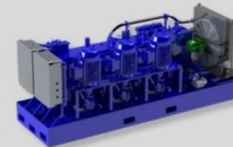
CONTROLS

- Discrete Signals
- Analog
- PLC and HMI integration for controlling:
 - speed, position, flow, pressure, motion, etc.



DESIGN & DRAFTING

- SolidWorks 3D-General Layout
- Schematics
- Operation Manual



DIAGNOSTICS

- Sample Ports
- Gauges
- Local and Remote Oil Monitoring
- PSI & Temperature Transducers



FIELD SERVICE

- Turn Key Installation
- Commissioning Support



24/7/365 Live-Support, Day or Night.



CONTACT US
800-722-2630



Powering American Industry



CFI CORPORATE

WORLDWIDE SERVICE: TEXAS & BEYOND



7725 South Major Drive
Beaumont, TX 77705



800-722-2630



isales@confluids.com

LOUISIANA

Serving Louisiana & Mississippi

337-205-0900

204 Jared Drive
Broussard, LA 70518

OKLAHOMA

Serving Oklahoma, Arkansas
& Kansas

918-251-7065

2009 North Willow Avenue,
Broken Arrow, OK 74012

ROCKY MOUNTAINS

Serving Wyoming, Colorado,
& New Mexico

918-251-7065

2009 North Willow Avenue,
Broken Arrow, OK 74012



www.confluids.com

Rev. November 2024